

Hemsby Beach Holiday Park Accommodation Details:

Heating and electric are included in the price on all accommodation, all beds made up on arrival. (No Towels Included)
All accommodation is 10:00am check-out, hot tubs are emptied at 07:00am on day of departure.



Sliver Plus 2 Bed Caravan: 35FT X 12FT Wide, Two Bedroom Caravan. One Double Bedroom and a Twin Bedroom. Double sofa bed in lounge. With an open plan lounge, kitchen and diner featured a flat screen TV and well equipped kitchen. Central heating plus gas fire in lounge. Walk In Shower (No Towels Included). Allotted car park space. Check In 3pm.

Price based on: 2 People Sharing £160pp - 3 People Sharing £150pp - 4 + People Sharing £140pp

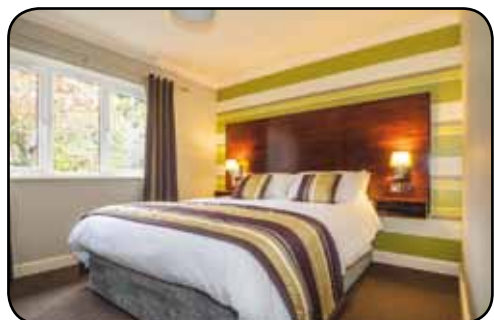
Apartments (Ground & First Floor): These ground & first-floor apartments feature 2 or 3 bedrooms, one en-suite with walk in shower plus a family bathroom with bath only (No Towels Included). A combined lounge and diner with TV, well equipped kitchen with cooker, microwave and fridge. Heating in lounge and bedrooms. Check In 3pm.

Price based on: 2 People Sharing £160pp - 3 People Sharing £150pp - 4 + People Sharing £140pp



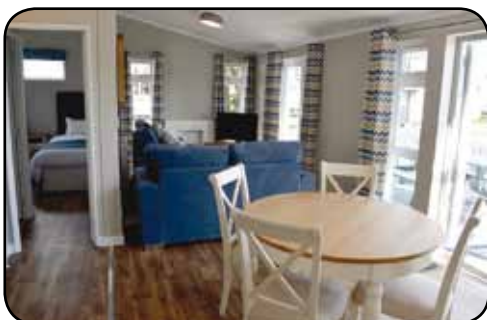
Gold Plus 2 Or 3 Bed Caravan: Stylish 12-ft wide caravan, one master double bedroom and one or two twin bedrooms with a pull-out sofa bed in the lounge. With an open plan lounge, kitchen and diner featured a flat screen TV and well equipped kitchen. Central heating plus gas fire in lounge. These caravans also feature a decking area with garden furniture. Walk In Shower (No Towels Included). Car park space. (Option of hot tub) Check In 3pm.

Price based on: 2 People Sharing £170pp - 3 People Sharing £160pp - 4 + People Sharing £150pp (Including Hot Tub Plus £5pp)



Gold 2 Bed Bungalows: These Bungalows feature a kitchen and living area as well as 1 double bedroom and 1 twin bedroom, each with its own bathroom for added privacy. Both bedrooms feature en-suites. Walk In Shower (No Towels Included). Allotted car park space. Check In 2pm.

Price based on: 2 People Sharing £185pp - 3 People Sharing £175pp - 4 + People Sharing £165pp



Platinum 2 Bed Lodges: Our most luxurious accommodation are perfect for 2 couples, featuring a master bedroom with en-suite walk in shower, twin bedroom plus family bathroom with shower over bath (No Towels Included). Also featuring a spacious, open lounge, diner and kitchen with a flat screen TV. Patio doors open onto generous deck with garden furniture and an outdoor hot tub. Allotted car park space. Check In 2pm.

Price based on: 2 People Sharing £200pp - 3 People Sharing £190pp - 4 + People Sharing £180pp